

#201004120057

LINE #	BEARING	DISTANCE
L1	S 37°24' E	33.70
L2	S 37°24' E	71.49
L3	S 37°24' E	104.89
L4	S 37°24' E	104.89
L5	S 80°19' E	106.23
L6	S 82°24' E	102.40
L7	S 82°24' E	46.40
L8	S 72°45' E	180.35
L9	S 35°17' E	17.14
L10	S 35°17' E	102.60
L11	S 44°10' E	228.02

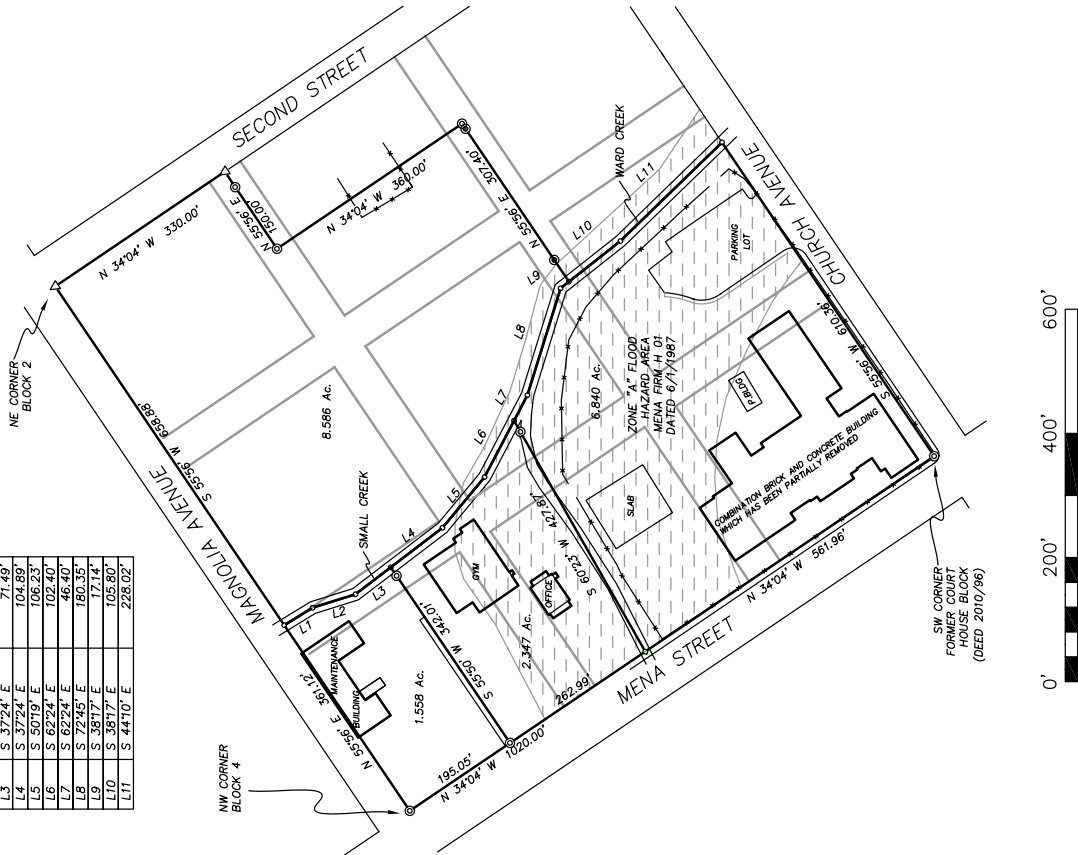
**SURVEY DESCRIPTIONS:**

**1.558 ACRE TRACT:** A part of Block 3 and Block 4 and the adjoining closed streets in the Original Town of Mena, Polk County, Arkansas described as follows: Beginning at the northwest corner of Block 4; Thence North 55 Degrees 56 Minutes East a distance of 361.12 feet along Magnolia Avenue to the center of a small creek; Thence South 31 Degrees 31 Minutes East a distance of 53.76 feet; Thence South 17 Degrees 26 Minutes East a distance of 72.40 feet; Thence South 37 Degrees 24 Minutes East a distance of 71.49 feet; Thence leaving the creek, South 55 Degrees 50 Minutes West a distance of 342.01 feet; Thence North 34 Degrees 04 Minutes West a distance of 195.05 feet along Mena Street to the Point of Beginning, containing an area of 1.558 acres as surveyed by P.T. Sloan, LS #947.

**2.347 ACRE TRACT:** A part of Block 4 and a part of Block 17 and a part of Block 18 and the adjoining closed streets in the Original Town of Mena, Polk County, Arkansas described as follows: Commencing at the northwest corner of Block 4; Thence South 34 Degrees 04 Minutes East a distance of 195.05 feet along Mena Street to the Point of Beginning; Thence North 55 Degrees 50 Minutes East a distance of 342.01 feet to the center of a small creek; Thence South 37 Degrees 24 Minutes East a distance of 104.89 feet; Thence South 50 Degrees 19 Minutes East a distance of 106.23 feet; Thence South 62 Degrees 24 Minutes East a distance of 102.40 feet; Thence leaving the creek, South 60 Degrees 23 Minutes West a distance of 427.87 feet; Thence North 34 Degrees 04 Minutes West a distance of 262.99 feet along Mena Street to the Point of Beginning, containing an area of 2.347 acres as surveyed by P.T. Sloan, LS #947.

**6.840 ACRE TRACT:** A part of Block 17 and a part of Block 18 and a part of Block 23 and the former court house block as described in Deed 2010/96 and the adjoining closed streets in the Original Town of Mena, Polk County, Arkansas described as follows: Beginning at southwest corner of the said former court house block; Thence North 34 Degrees 04 Minutes West a distance of 561.96 feet along Mena Street; Thence North 60 Degrees 23 Minutes East a distance of 427.87 feet to the center of a creek; Thence South 62 Degrees 24 Minutes East a distance of 46.40 feet; Thence South 72 Degrees 45 Minutes East a distance of 180.35 feet; Thence South 38 Degrees 17 Minutes East a distance of 122.93 feet; Thence South 44 Degrees 10 Minutes East a distance of 228.02 feet; Thence leaving the creek, South 55 Degrees 56 Minutes West a distance of 610.36 feet along Church Avenue to the Point of Beginning, containing an area of 6.840 acres as surveyed by P.T. Sloan, LS #947.

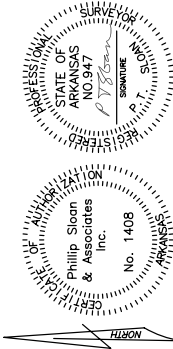
**8.586 ACRE TRACT:** All of Block 2 and a part of Block 3 and a part of Block 18 and a part of Block 19 and the adjoining closed streets in the Original Town of Mena, Polk County, Arkansas described as follows: Beginning at the northeast corner of Block 2; Thence South 55 Degrees 56 Minutes West a distance of 658.88 feet along Magnolia Avenue to a small creek; Thence South 31 Degrees 31 Minutes East a distance of 53.76 feet; Thence South 17 Degrees 26 Minutes East a distance of 72.40 feet; Thence South 37 Degrees 24 Minutes East a distance of 71.49 feet; Thence South 50 Degrees 19 Minutes East a distance of 106.23 feet; Thence South 62 Degrees 24 Minutes East a distance of 102.40 feet; Thence South 60 Degrees 23 Minutes East a distance of 46.40 feet; Thence South 72 Degrees 45 Minutes East a distance of 180.35 feet; Thence South 38 Degrees 17 Minutes East a distance of 17.14 feet; Thence leaving the creek, North 55 Degrees 56 Minutes East a distance of 307.40 feet; Thence North 34 Degrees 04 Minutes West a distance of 360.00 feet; Thence North 55 Degrees 56 Minutes East a distance of 150.00 feet; Thence North 34 Degrees 04 Minutes West a distance of 330.00 feet to the Point of Beginning, containing an area of 8.586 acres as surveyed by P.T. Sloan, LS #947.




F 1/2" REBAR PIN  
 G IRON PIPE  
 H SPRINGS OR ALUM. CAP  
 M 1" CONCRETE CORNER POST  
 N 1" PINE TREE  
 O HARDWOOD TREE  
 P MONUMENT AS NOTED  
 Q FENCE LINE  
 R COMPUTED CORNER (NOT SET)  
 S 1/2" REBAR PIN  
 T ALUMINUM CAP  
 U MONUMENT AS NOTED

REFERENCE DOCUMENTS:  
 BASIS OF BEARINGS: TRUE NORTH  
 PINK RIBBON DENOTES PROPERTY CORNERS AND LINES

This plat represents my professional opinion as to location of the boundaries of the person described parcels of land, based on the information made available to me at the time of the survey. I have not conducted a physical inspection of the plat, and the lines on this plat, and possession lines such as fence lines, moved lines, building encroachments or other encroachments, legal ownership. These questions should be resolved with the adjoining land owners before any changes are made. Except as reflect any facts concerning environmental or subsurface conditions, assessments, surface utility locations, subsurface property for any particular purpose, or information that would be disclosed by a title search.



**Phillip Sloan & Associates, Inc.**  
 230 Polk 74, Mena, Ar. 71953  
 Phone 479-394-6492  
 philip@phillipsloan.com

FOR THE EXCLUSIVE USE OF: MENA PUBLIC SCHOOL SYSTEM  
 COPYRIGHTED: APRIL 2, 2010  
 JOB NO: 5399  
 STATE SURVEYOR'S CODE: